

# MONTHLY MEMBERSHIP PROGRESS REPORT

LOCATION REP OF BANGLADESH

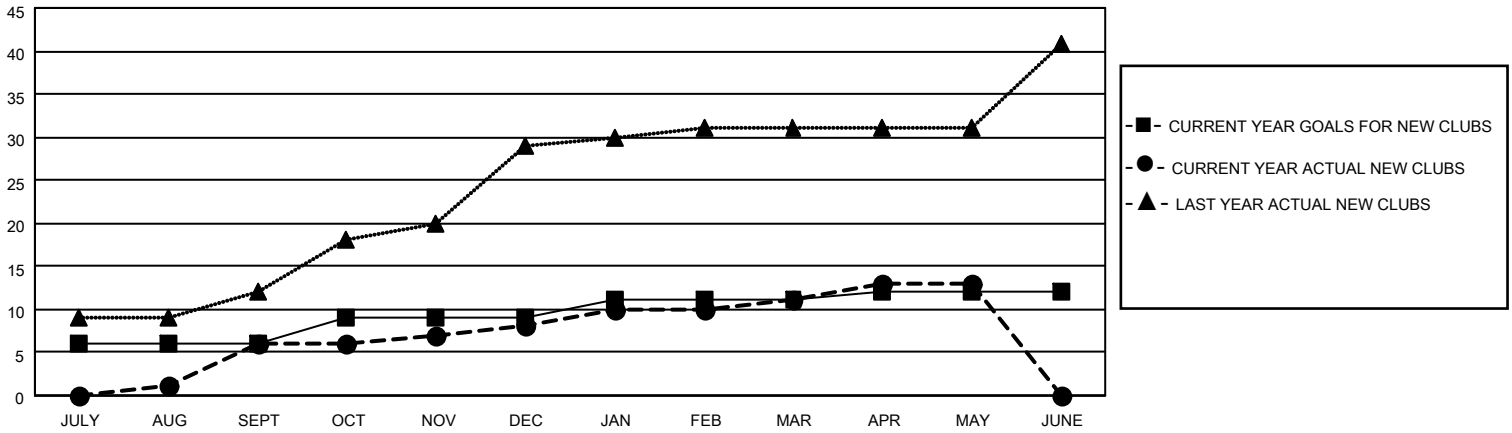
District 315A1

Results as of: 5/31/2022

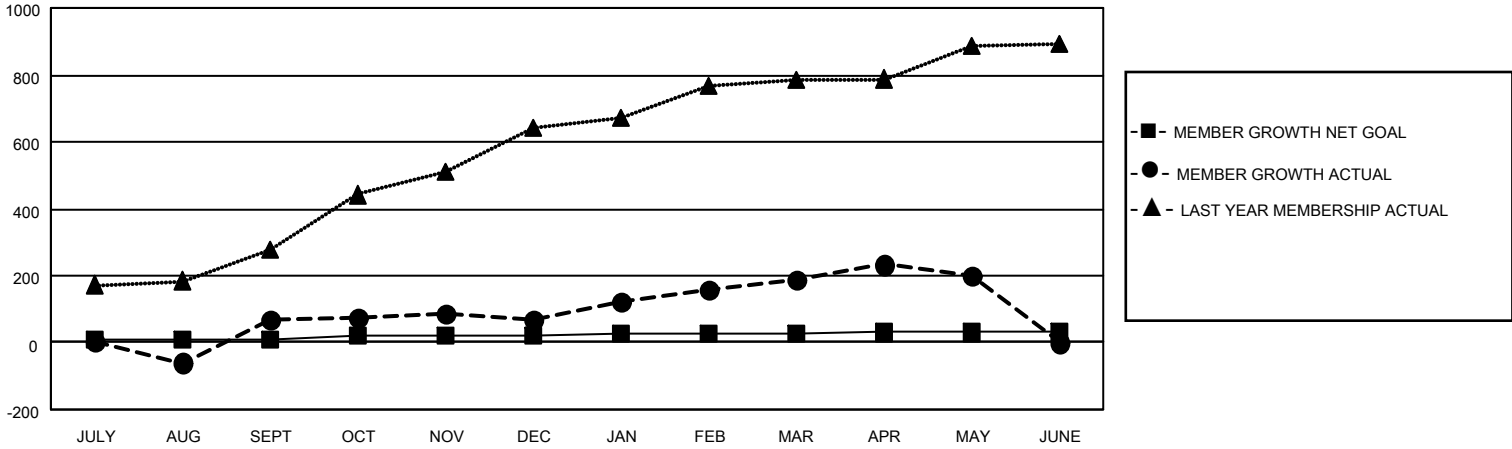
Clubs			
RESULTS FOR 2021-2022			
QUARTER	NEW CLUB GOAL	NEW CLUBS	DROPPED CLUBS
JULY/AUG/SEPT	6	6	5
OCT/NOV/DEC	3	2	3
JAN/FEB/MAR	2	3	0
APR/MAY/JUNE	1	2	0

Members			
RESULTS FOR 2021-2022			
QUARTER	MEMBER GROWTH NET GOAL	MEMBER GROWTH ACTUAL	DROPPED MEMBERS ACTUAL (including transfers)
JULY/AUG/SEPT	10	264	182
OCT/NOV/DEC	10	150	143
JAN/FEB/MAR	5	152	29
APR/MAY/JUNE	5	423	321

**GOALS AND ACTUAL NEW CLUBS CUMULATIVE**



**GOALS AND ACTUAL MEMBERS CUMULATIVE**



**DROPPED CLUBS: 8**

**97 CLUBS OF 150 ADDED 1 OR MORE NEW MEMBERS**

**GENDER DISTRIBUTION**

MALE	2,884 (77.69%)
FEMALE	828 (22.31%)
NON BINARY	0 (0.00%)
PREFER NOT TO ANSWER	0 (0.00%)

**DROPPED MEMBERS**

[CLICK HERE FOR CUMULATIVE MEMBERSHIP DATA](#)

DECEASED	4
CLUB CANCELLED	148
OTHER	523
<b>TOTAL</b>	<b>675</b>

TOTAL FAMILY UNIT MEMBERS 1,949

FAMILY MEMBERS PAYING HALF DUES 1,245